

# the belmont - E

3 - 4 Beds / 2.5 - 3.5 Baths / Owner's Retreat Main  
2872 - 3100 Square Feet

EVANS  
COGHILL  
HOMES

## ELEVATION E



## ELEVATION (SHOWING 3 CAR GARAGE)



### ABOUT THE BELMONT:

Our Belmont plan is uniquely and specifically designed for our Nims Village buyer. The open layout is fresh and new, yet boasts rooms for everyone. Main floor living features spa-worthy retreats. Logical spaces to entertain and relax are everywhere. Celebrate with loved ones in a gourmet kitchen that welcomes in every way. Plus, enjoy an inventive and creative second floor layout. Overall, the Belmont caters to those who are looking for something personal while still seeking luxury. Filled with intuitive and quality elements, this will be your new perfect home!

Renderings shown are meant to be representative of the home and may include details, features or colors not included in the actual home. Please consult sales representative for details.

Contact: **Paul Stanger**  
704.275.9170  
pstanger@evanscoghill.com

[evanscoghill.com](http://evanscoghill.com)

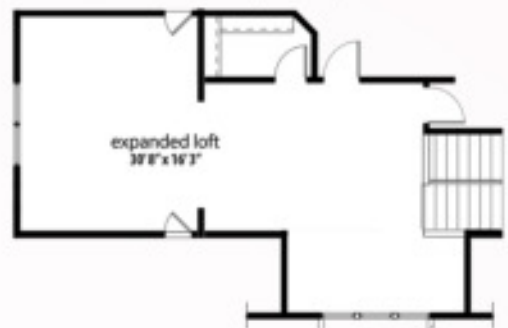
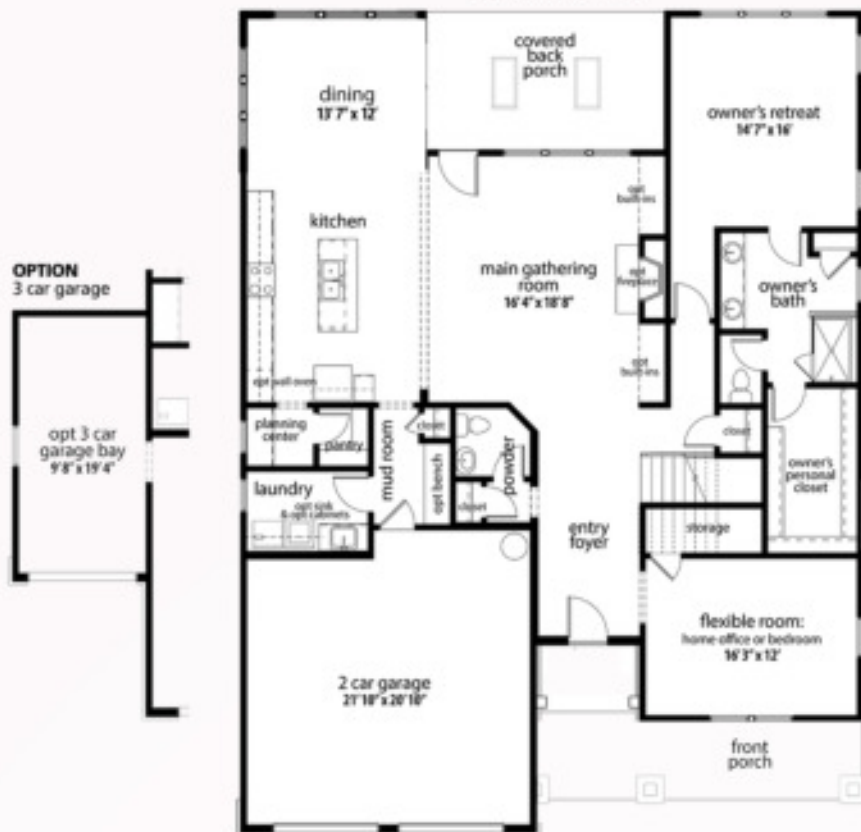
NIMS VILLAGE

# the belmont - E

3-4 Beds / 2.5 - 3.5 Baths / Owner's Retreat Main

2872 - 3100 Square Feet

## MAIN LEVEL



## BASE PLAN UPPER LEVEL



## ALTERNATE UPPER LEVEL

Renderings shown are meant to be representative of the home and may include details, features or colors not included in the actual home. Please consult sales representative for details.

Contact: **Paul Stanger**  
704.275.9170  
pstanger@evanscoghill.com